



# Kittitas County Sheriff's Office Annual Report 2018



**Keeping the Peace since 1883**



**Also the history of Sheriffs**



**The Mission of the Kittitas County Sheriff's Office is**

**To protect all people, keep the peace and uphold the Constitution of the United States**





**Kittitas County Honors the Memory of**  
**Our Fallen Hero**

**DEPUTY RYAN THOMPSON #35**

**END OF WATCH – MARCH 19, 2019**



Deputy Bruce



C.O. Crandall



Deputy Meckly

New on our team



**Kittitas County Sheriff's Office 2019**

“This is us!”

# \*The Beginning

\*Kittitas County formed in 1883 from Yakima County



Kittitas County's first Sheriff  
John C. Goodwin (1883-1885)  
A Civil War Veteran



2nd row 2nd from  
left

# Sam T. Packwood



- Served 1885-1890
- Born in 1842
- Arrived in Kittitas 1874
- Roslyn Mining Strikes 1888 and 1889
- Member of Confederate Army, then Union
- Former Justice of the Peace, 1870s
- One of first County Commissioners
- Organized volunteer fighters against Indians 77-79
- 1889, Great Ellensburg Fire

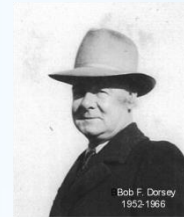




# Kittitas County Sheriff's From The Beginning



John C. Goodwin	Rep.	1883-1885 (appt. Dec. 17, 1883; Res. Nov. 7, 1884)
Samuel T. Packwood	Dem.	1884-1889 (appt. Nov. 7, 1884)
J. L. Brown	Rep.	1889-1891
Anthony A. Heade	Dem.	1891-1895
W. M. Stinson	Pop.	1895-1897 (Died Aug. 28, 1897)
L. C. Wynegar	Pop.	1897-1899 (appt. Sept. 15, 1897)
Isaac Brown	Rep.	1899-1903
Robert L. Thomas	Dem.	1903-1905
L. A. Thomas	Dem.	1905-1907
W. E. Crowley	Dem.	1907-1910
B. H. German	Dem.	1911-1914
Howard Garrison	Dem.	1915-1918
J. W. Thomas	Rep.	1919-1923
George Gray	Rep.	1923-1931
Arthur W. Byars	Dem.	1931-1934
Wayne Ballard	Dem.	1935-1942
Gus Lindeman	Dem.	1943-1951
Robert F. Dorsey	Dem.	1951-1967
Robert A. Barrett	Rep.	1967-1982
Tom Young	Dem.	1983-1986
Robert McBride	Dem.	1986-1998
Gene Dana	Dem/NP	1999-2019



# Sheriff's Responsibilities

Enforce the Laws

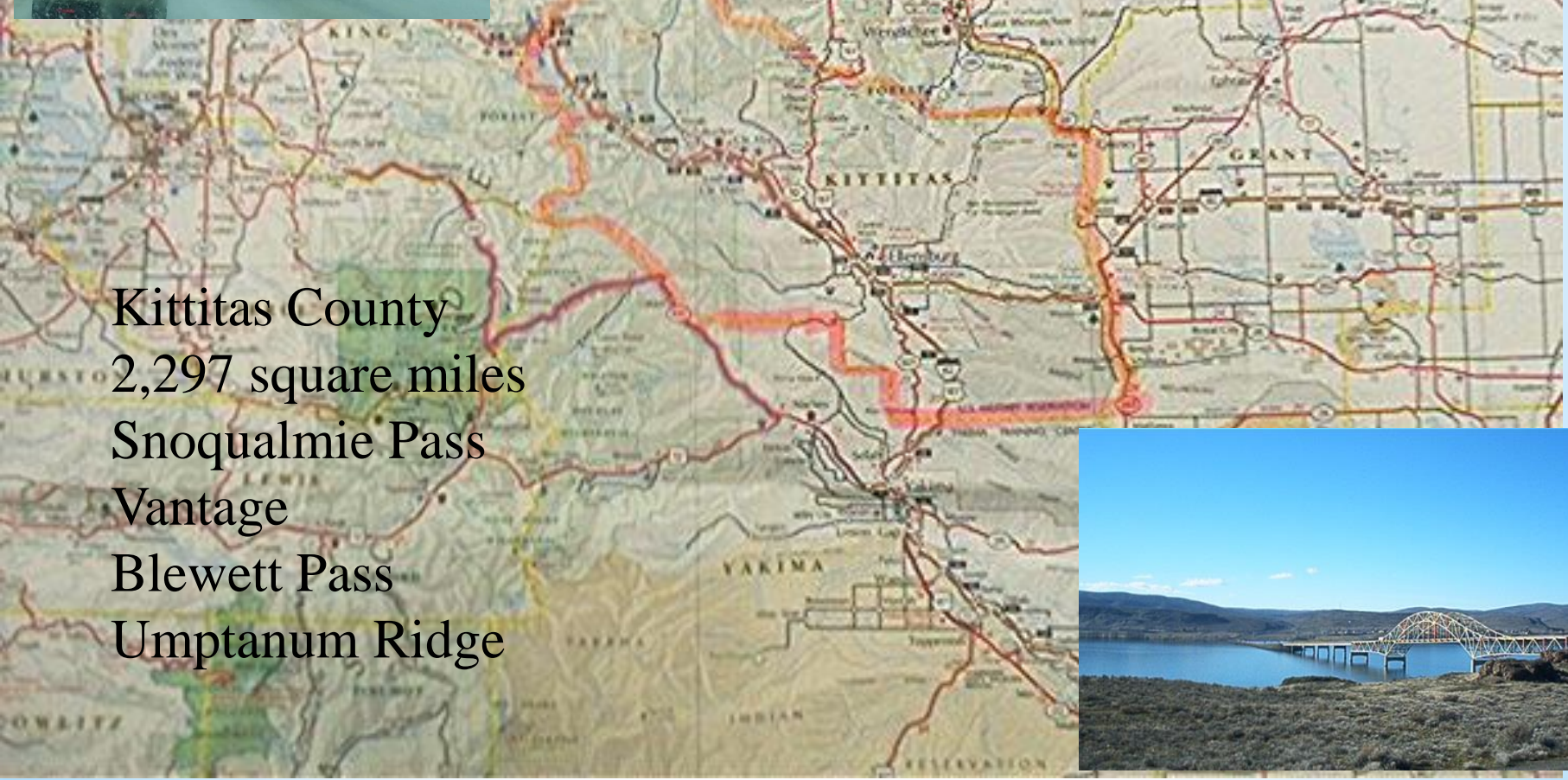
Carry out the orders of the Courts

Maintain the County Corrections Facility

Search and Rescue

Register and track sex offenders

Emergency Management



Kittitas County  
2,297 square miles  
Snoqualmie Pass  
Vantage  
Blewett Pass  
Umptanum Ridge





Gene Dana is on his sixth term as the elected Sheriff. He has been in law enforcement for over 45 years, serving with the Washington State Patrol for 25 years. He is the longest currently serving elected Sheriff in the State and the longest serving Sheriff in the History of Kittitas County. He is the past President of the Washington Sheriffs' Association, past President of the Ellensburg Rodeo Board, past president of the Ellensburg Rotary club, serves on the KITTCOM executive board and the Law and Justice Council. The Sheriff is responsible for law Enforcement, Corrections, Civil division, Courthouse Security, Emergency Management, Search and Rescue and Marine patrol.



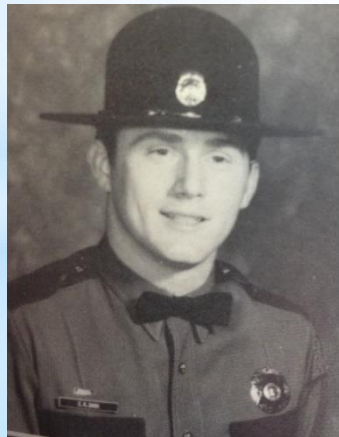


**54th Trooper Cadet Class**

January 4, 1977



1974 Dodge





The Sheriff runs for office every 4 years.

The Sheriff is authorized by RCW 41.14.070 to appoint 5 unclassified positions based upon the total number of current personnel (51-100)  
“The key to a successful Sheriff is the command staff, the officers, the civilian employees and volunteers that support the office day after day.”



Sheriff Gene Dana



Undersheriff  
Clayton Myers



Commander  
Steve Panattoni  
Corrections



Office Administrator  
Kim Dawson



Commander  
Darren Higashiyama  
Emergency Management



Commander  
Ben Kokjer  
Operations

**Line Division**

**3 Sergeants**

**4 Corporals** **Corrections Division**

**21 Deputies**

**1 Lieutenant**

**2 Sergeants**

**4 Corporals**

**19 Correction Officers**

**6 Control Room operators**

**3 Law Clerks**

**6 Detectives**

**Drugs**

**Major Crimes**

**RSO/General**

**Sexual Assault**

**6 Courthouse Security  
& Juvenile Transport**

**Administration**

**7 Law Clerks**

**1 Law Enforcement Technologist**

**Volunteers**

**17 Reserve Deputies**

**1 Chaplain**

**100+ KSAR**

**13 Citizen Patrol**



In Service Training  
24 Hours per year





## Kittitas County Search and Rescue

We have around 80 volunteers currently.

There were 25 missions in 2018 that involved volunteers (including searches and evidence) with a total of around 2,417 volunteer hours.

We had around 2,850 hours of training logged by the volunteers.



# Marine Patrol, Swift Water and Ice Rescue

Responding to all waters in Kittitas County



## EMERGENCY MANAGEMENT

The Sheriff's Office of Emergency Management as well as other County and municipal departments work with Washington State agencies to plan, equip, train for, and practice our response to emergency situations. Kittitas County updates and maintains the County Comprehensive Emergency Management Plan.

In the Sheriff's Office, we work hard on disaster preparedness. With well-trained and dedicated personnel and organized, well-prepared citizens, we can work together to minimize the danger and damage of any emergency we face.



# Major wildfires in Kittitas County

August 2012- Taylor Bridge Fire, 23,501 acres off State Route 10, human caused. 20 homes destroyed.

September 2012- Table Mountain Fire, 42,481 acres caused by lightning caused. One home lost.

JULY 2013- Colockum Tarps Fire, 81,733 acres started in Chelan County, human caused. Three homes and several buildings destroyed.

July 2014- Saddle Mountain Fire, 24,917 acres Southeast of Ellensburg. Three homes and several buildings destroyed.

August 2014- Snag Canyon Fire , 12,599 acres Northeast of Ellensburg. Lightning caused. Eight homes and 11 other structures burned.

August 2017- Jolly Mountain Fire, 36,808 acres Northwest of Cle Elum. Lightning caused, 1000 residents evacuated, no homes lost.

July 2018 Ryegrass Fire 1,600 acres, accidentally caused by vehicles

July 2018 Boylston Fire 70,000 acres, accidentally caused by vehicles



# Kittitas County Corrections

## 2018 Stats

Design Capacity 202

Average Daily Population (ADP) 105

Average Length of Stay 10 days

Males (ADP) 88

Females (ADP) 18

Unknown Gender (ADP) 0

White (ADP) 80

Black (ADP) 6

Hispanic (ADP) 14

Native American (ADP) 3

Pacific Islander (ADP) 0

Asian (ADP) 1



# State wide jail chain to transport prisoners



Courthouse Security and Court Transport Officers  
Security for Upper and Lower District Courts, Superior Courts  
and all Departments and Offices in the Courthouse



2018

Transports (Court and Juvenile) 101  
Civil Papers Served 167  
Along with Writs and Sheriff Sales



## TOTAL INCIDENTS

<u>2016</u>	<u>2017</u>	<u>2018</u>
12,890	13,908	14,113

Averages about 40 calls per day



For NIBRS Washington State Crime Stats go to:  
<https://www.waspc.org/crime-statistics-reports>

## Population Increases, Visitors and Cross State Traffic Impact Our County

### Population Growth

2014	42,582	+757	+1.81%
2015	43,081	+509	+1.20%
2016	44,928	+757	+4.26%
2017	46,205	1,277	+2.84%
2018	47,364	1,159	+2.5%



# County Activity of Interest

## Total Incidents

2014	15,952
2015	10,899
2016	12,890
2017	13,908
2018	14,113



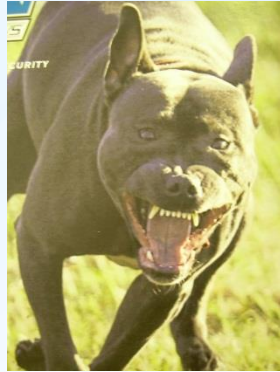
## Agency Assists

2014	472
2015	362
2016	433
2017	562
2018	616



### Animal Complaints

2014	229
2015	241
2016	231
2017	259
2018	323



### Burglaries

2014	101
2015	67
2016	54
2017	54
2018	103

### Assaults

2014	69
2015	83
2016	82
2017	82
2018	77

### Frauds

2014	79
2015	89
2016	113
2017	117
2018	114

### Controlled Substance

2014	25
2015	26
2016	11
2017	12
2018	28

<u>DUIs</u>	
2014	95
2015	99
2016	66
2017	75
2018	70



### Weapons Complaints

2014	43
2015	33
2016	46
2017	59
2018	45



### Accidents Total

2014	252
2015	295
2016	295
2017	274
2018	375



### Of Interest in 2018

- 720 Citizen assists
- 336 civil papers
- 599 Suspicious Circumstances
- 266 Warrants Served
- 464 Welfare Checks

### Traffic Stops

2014	4169
2015	2,162
2016	2,531
2017	2,748
2018	2,781



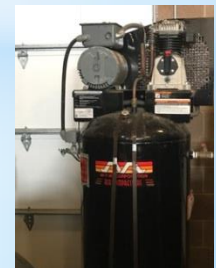
Washington State law RCW 42.56 requires all agencies to respond to requests for public records in a timely manner and in an acceptable way. Records that are created by the department during the course of business are considered public records. The term "public records (RCW 42.56.010(2))" applies to any record, no matter the media, including electronic.

**Sheriff's Office**  
**Public Disclosure Requests- 2018**  
**602 Hours, 736 Requests**

- Incident reports
- Collision reports
- Narratives
- Background Checks
- Supplemental reports
- Photos
- Statements
- Videos
- Probable cause



# 1033-Surplus equipment acquisition program benefits Kittitas County Law Enforcement



## Concealed Pistol Licenses

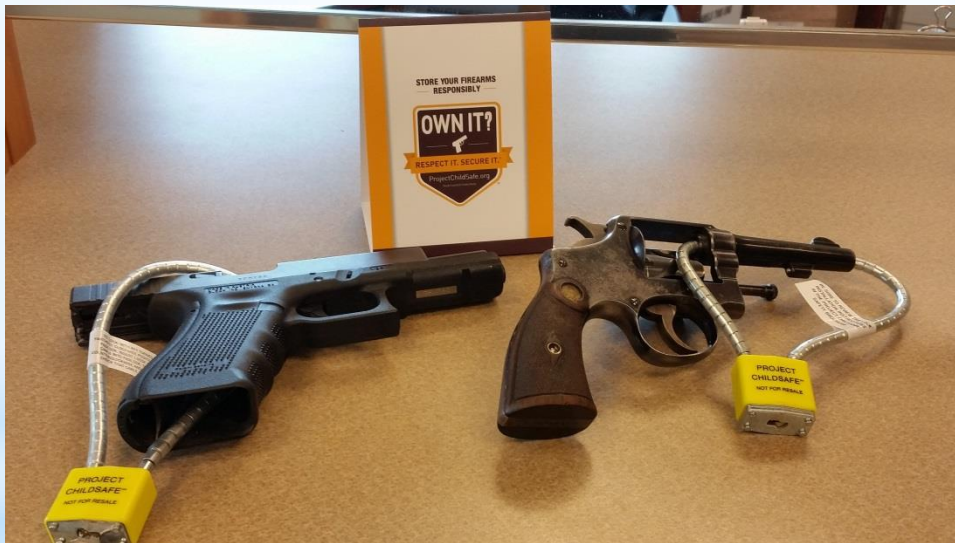
2018 had 1,601 issued CPLs

2017 had 1,230 issued CPLs


2016 had 1415 issued CPL's

2015 had 1085 issued CPL's

2014 had 940 issued CPL's







**Kittitas County Sheriff's Office**  
**Citizen Patrol**

**802 Hours in 2018**  
**3,432 miles**

Primary job is to provide extra eyes for the Sheriff across the county patrolling trail heads, boat launches, parks, businesses, schools and neighborhoods. To document and report suspicious activity without jeopardizing themselves.

Other jobs that keep deputies on the street:

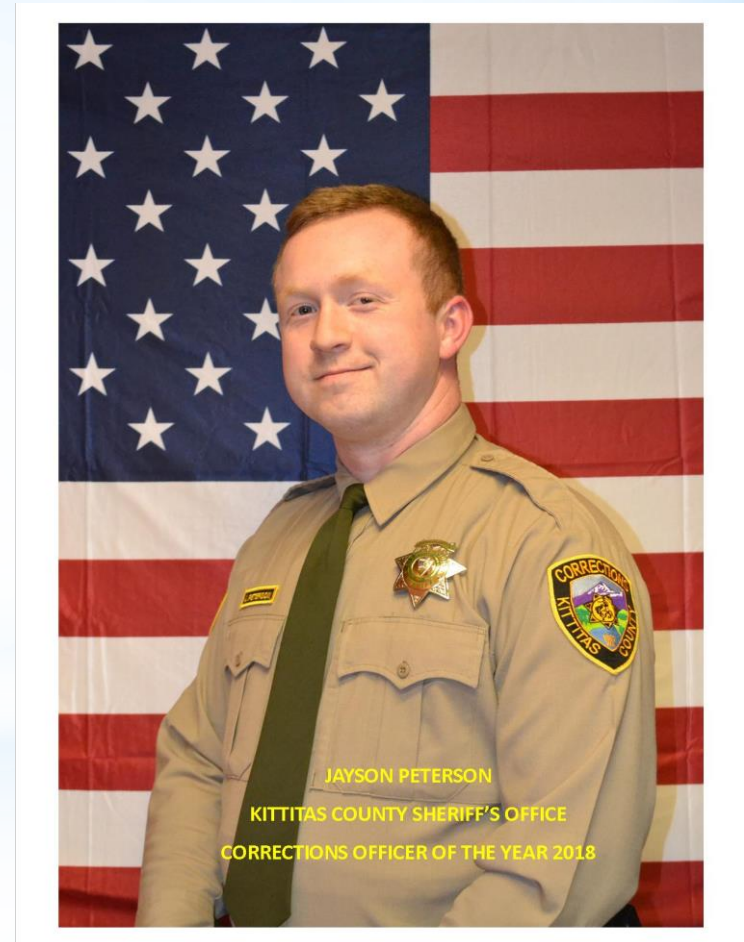
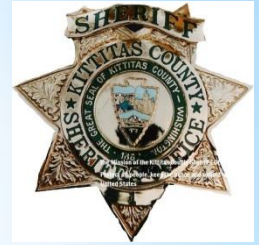
- 1) Transport vehicles for repair or equipment installs
- 2) Assist at major events- marathons, fairs, parades and emergencies
- 3) To assist with emergency management needs during disasters
- 4) Assist as players for mock scenes during training exercises
- 5) Assist with neighborhood watch programs
- 6) Assist RSVP of Kittitas County w/Free Document Shred, Free Drug Take Back

2018 totals  
15,500 lbs. documents  
shredded  
330 lbs. drugs destroyed



# Officers of the Year 2018

Selected for outstanding service to citizens of Kittitas County



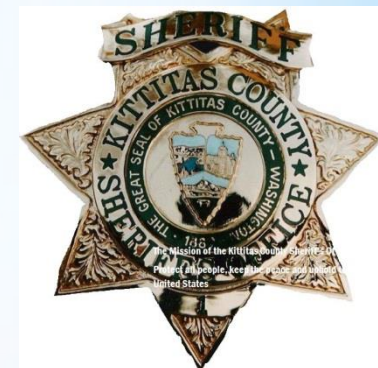
## KCSO Supports the National Guard

“The people that help protect our Country”



Deputy Ben Corbett

Sergeant Nate Foster



## IN MEMORY OF KITTITAS COUNTY DEPUTIES



Deputy George Boice, age 62

Killed when his patrol car was struck by a train  
While responding to a call. January 26, 1946



Deputy Victor Cusworth, age 46

Killed when his patrol car hit the back of a  
Slow moving truck while responding to a call.  
4 A.M. March 15, 1959



Deputy Rick Rhodes, age 46

Killed as a passenger in patrol car that struck  
slow moving truck March 15, 1959



Deputy Ryan Thompson, age 42

Fatally shot following a pursuit  
March 19, 2019



**The Thin Blue Line** is a symbol used by law enforcement, originating in the United Kingdom but now prevalent in the United States and Canada to commemorate fallen officers and to show support for the living law enforcement officers and to symbolize the relationship of law enforcement in the community as the protectors of fellow civilians from criminal elements. In the United States of America, each stripe on the emblem represents certain respective figures: the blue center line represents law enforcement, the top black stripe represents the public and the bottom represents the criminals.

US flag based "Thin Blue Line"

Proponents of the symbol assert that the identifier is intended to show support for police and the US flag-based version of the thin blue line has become a symbol for the Blue Lives Matter movement. In the wake of the 2016 shooting of Dallas police officers, a US flag based version became popular among law enforcement personnel, their families, and supporters.

Like the Green and Blue Sea Hawks Flags, it is not a desecration of the American flag, because it's a completely different flag.

“ Blue Lives Matter”

# Powered by the 3/10<sup>th</sup> of 1% sales tax.

- Six Deputies
- 1 Detective
- 1 Law Clerk (evidence)
- 1 LE Technologist
- 4 Security Officers



The office of Sheriff has not only survived, it has flourished. The most significant issue regarding the longevity of the office lies with the concept that it is an elected position. This allows members of the community to have impact on the selection process, and the removal process, by virtue of their vote.



# Thank You From The Kittitas County Sheriff's Office



For more info go to our website.

<https://www.co.kittitas.wa.us/sheriff/default.aspx>

We average 25,000 visitors a month!